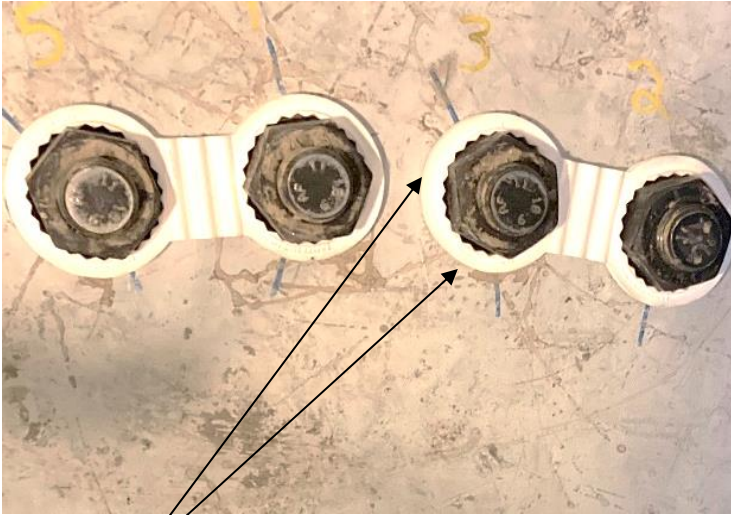


Zafety Lug Lock®* – Wind Turbine Installation & Removal Instructions

Zafety Lug Lock® creates resistance between two nuts/bolts to minimize their ability to rotate resulting in reduced risk of nut loss/bolt loosening by securing the lug nuts/bolts together.*



For Proper Removal:

Pull up at end.

***Do not pull up in the middle,
Do not use a tool to pull up in
middle.***

Normal Removal:

Use your fingers (gloves if needed) to pull up on the ends of the unit beside the nuts/bolts.

Installing/Reinstalling in freezing or cold conditions:

Warm the units up over a hot air vent or inside a warm building and keep them warm until installing. For installation in a cold tower – keep the units at room temperature or above in a thermal bag (regular insulated bag) with a thermal pack (hand warmer etc.); they will stay pliable for easier installation.

Installation Instructions:

1. The nuts/bolts should be installed and fully torqued per engineering requirements.
2. Zafety Lug Lock® units are the same on both sides of the unit and can be installed with either side out. The Zafety Lug Lock® unit will adjust to the position of the nuts/bolts.
3. Once the nuts/bolts are properly installed, apply the Zafety Lug Lock® unit by positioning a unit over two adjacent nuts/bolts and then pushing one side on. Bend the accordion section (if required) to position the unsecured side so that it can be pushed onto the nut/bolt. The combination of the accordion effect and the multiple teeth will allow the unit to fit over the corners of the nut/bolt no matter how the nut/bolt is positioned.
4. Push the Zafety Lug Lock® units down to the bottom of the nut/bolt. You cannot damage or break the Zafety Lug Lock® unit by pushing it down.
5. If you need to remove and/or readjust the Zafety Lug Lock®, pull up on the unit at the ends where it is surrounding the nut/bolt, not in the middle. Do not use a tool or screw driver to pull up in the middle.
6. Follow all normal safety and maintenance inspections.¹
7. **Nuts/bolts can be torque checked without removing the Zafety Lug Lock® units if enough of the nut/bolt is accessible for the torquing tool.**

An installation, torque check and removal example on a wheel may be viewed at <https://www.youtube.com/watch?v=QrBJaQ0JZkq>. This example uses the same principles.

¹ The installation of Zafety Lug Lock® does not exclude the need for standard safety & maintenance procedures

****Zafety Lug Lock® is a Registered Trademark and CA Pat. 2,637,356 & US Pat. 8708627 B2 of Tafcan Consulting Ltd.***

www.zafetyluglock.com